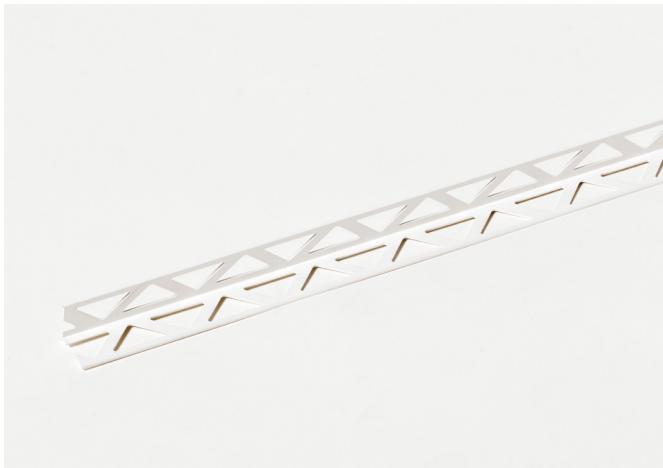


## BASWA PVC edge protection profile

2024 / 1



### Product description and application areas

Symmetrical BASWA PVC edge protection profile for creating corners on straight and curved BASWA surfaces (min. radius: 50 cm).

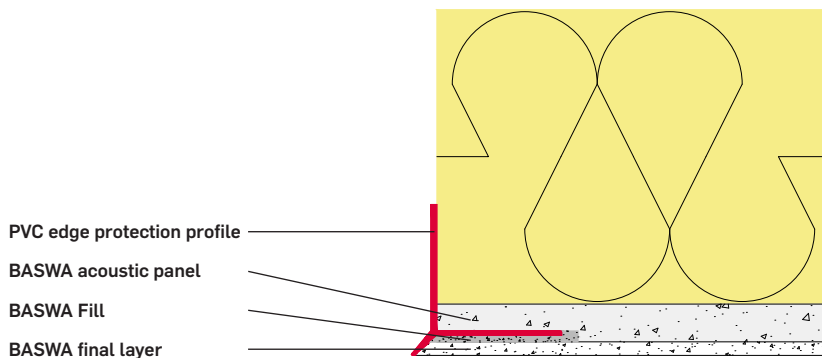
### Product Specifications

<b>material</b>	PVC plastic, manufactured according to DIN 16941 / fire class B1 according to DIN 4102
<b>article number</b>	a027
<b>profile length</b>	200 cm
<b>side width</b>	22.5 x 22.5 mm
<b>colour</b>	white, RAL 9010
<b>weight / piece</b>	approx. 100 grams
<b>delivery type</b>	single or carton
<b>storage</b>	Store lying on a flat surface and protect from loads

## Instructions for use

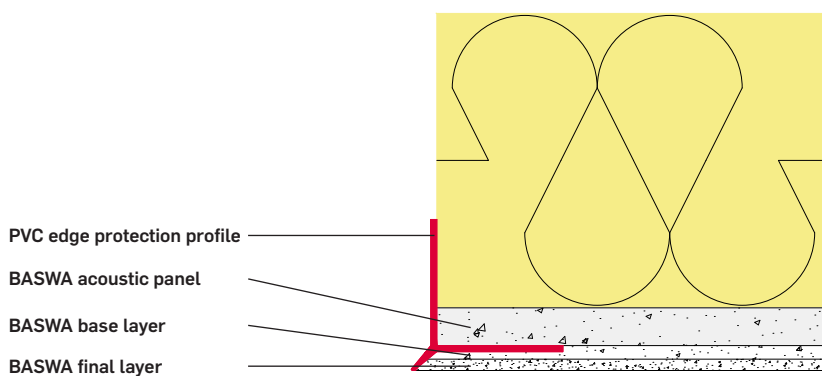
### Application for single layer systems:

1. Grind the acoustic panel approx. 1.5 mm deep back flat over the width of the leg and remove dust to ensure optimum adhesion of the profile to the acoustic panel.
2. Fix the BASWA PVC edge protection profile with BASWA spray adhesive.
3. Subsequently fill the profile with BASWA Fill flush with the acoustic panel.  
Attention! No commercially available gypsum filler/glue or similar may be used for embedding in the area of the acoustic panels!
4. After complete drying, the BASWA Fill must be sanded back so that the upper edge of the profile protrudes by approx. 1.5 - 2.0 mm (do not sand the pull-off edge of the profile, as this can be irreversibly damaged).
5. Apply the BASWA acoustic coatings to the surface seamlessly and work it flush with the profile.  
(The front side of the acoustic panels can be plastered with BASWA acoustic coatings or with commercially available coatings (gypsum filler etc.).)



### Application for two-layer systems:

1. Grind the acoustic panel flat and remove dust to ensure optimum adhesion of the profile to the acoustic panel.
2. Fix the BASWA PVC edge protection profile with BASWA spray adhesive.
3. Finally cover the surface with BASWA acoustic coatings seamlessly and work the final coating flush with the profile. (The front side of the acoustic panels can be plastered with BASWA acoustic coatings or with commercially available coatings (gypsum filler etc.).)



**Installation advice:**

The exact, flush-fitting installation of the edge protection profile is decisive for the lines in the end area of BASWA surfaces. In the case of curves, the profile must be cut in at the sides in order to adapt the profile to the required radius.

**Legal notice**

The above information, in particular the proposals for processing and use of our products, are based on our knowledge and experience in the normal case, provided that the products have been stored and used properly. Due to the different materials, substrates and different working conditions, a guarantee of a work result or a liability, regardless of which legal relationship, can not be substantiated either from these instructions, or from an oral consultation, unless we acted in this regard intent or gross negligence falls. In doing so, the user must prove that he has written all the knowledge required for the appropriate and promising evaluation by BASWA are required to have timely and complete transmission to BASWA. The user must check the products for their suitability for the intended purpose. Changes at the product specifications are reserved. Rights of third parties must be observed. Incidentally, our respective terms of sale and delivery apply. The latest product data sheet applies, which can be requested from us.