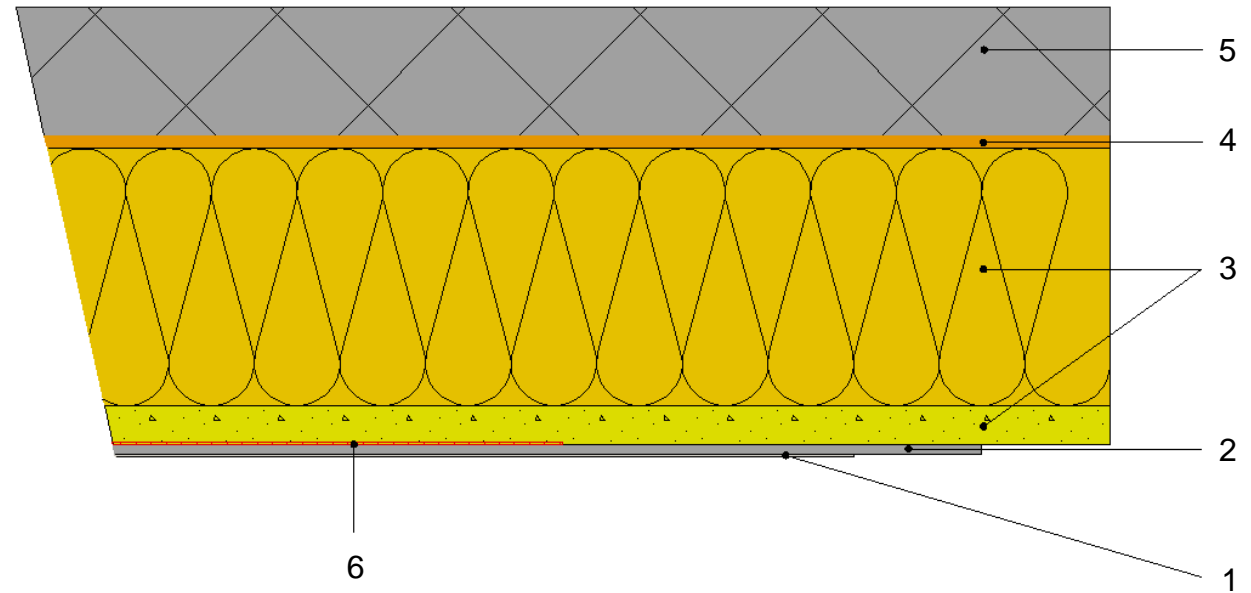


D_084_en Hybrid system - with sealed pre-coating

Important:

Before applying the base and top coat, the pores of the pre-coating are sealed in the area of the desired reflective field. (With transparent dispersion or plaster filling with primer - beige).

This detail will show irregularly occurring soiling during the period of use. (See planning documents page 15-16)



1. BASWaphon – Top surface layer
2. BASWaphon – Base primary layer
3. BASWaphon – Acoustic Panel
4. BASWafix C adhesive cement-containing mortar
5. Concrete
6. Latex filler / or plaster coating with primer



BASWA acoustic AG
 Marmorweg 10
 CH – 6283 Baldegg
 www.baswa.com

The structural, static and physical construction characteristics of BASWaphon acoustic systems can only be reached if the sole use and processing of BASWaphon system components according to processing guidelines is ensured.

Created
 Gabriell Gjonlleshaj

Date
 Aug. 31, 2010

Reviewed
 Eric Sulzer

Approved
 Guido Koch

Technical changes reserved. The then-current version applies. Our guarantee only applies to the flawless composition of our materials. Information regarding usage, amounts and versions is based on experience, which cannot be transferred to differing conditions without adjustments. The information included in the diagram complies with the current state of the art. However, it cannot contain the entirety of generally accepted rules of civil engineering, applicable standards, guidelines and technical rules. These must be observed appropriately, in addition to the processing regulations, by the person performing the work. All rights reserved. Changes, reprints and photomechanical, as well as electronic, reproduction, even in excerpts, require the explicit permission from BASWA acoustic AG, Marmorweg 10, 6283 Baldegg, Tel.: +41 41 914 02 22, Fax: +41 41 914 02 20. Shipment not via the specialized trade. According to our general terms and conditions, shipping and payment conditions (general terms and conditions, see www.baswa.com), only to certified processors.