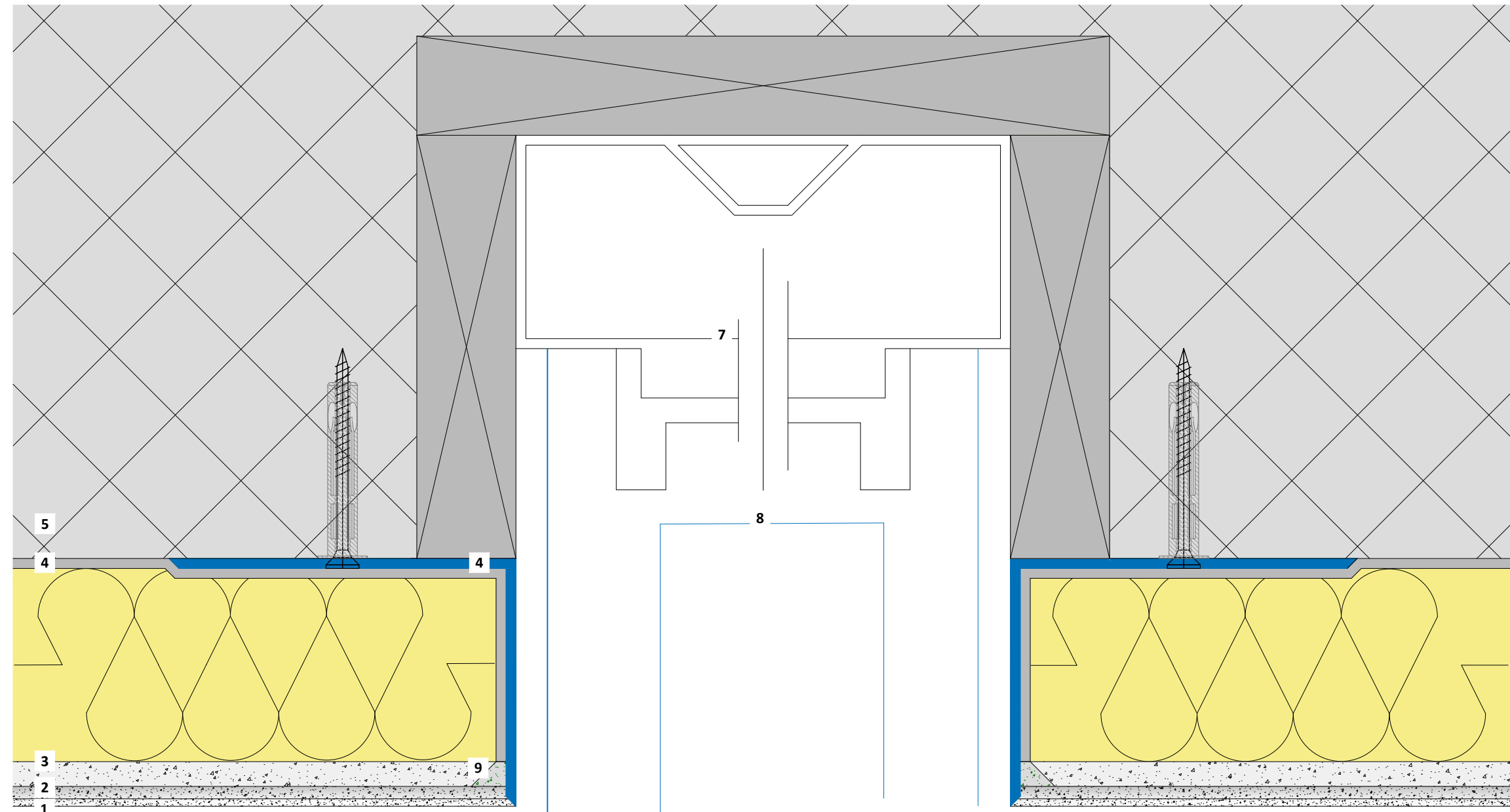


Connection to glass partition wall with BASWA-aluminium angle profile

Important:

Take into account the expansion coefficient of materials used near heat sources. Danger that cracks form, if aluminium, steel and PVC angle profiles are used! Acoustic panels glued front side against angle profile!



- 1 BASWA Top - Finish coat
- 2 BASWA Base - Base coat
- 3 BASWA Phon - Acoustic panel
- 4 BASWA Fix C - Cement adhesive
- 5 Concrete
- 6 L-angle profile aluminium a271/a348 or PVC a314/a316
- 7 Securing profile for glass partition wall
- 8 Glass partition wall (afterwards fitted and secured)
- 9 BASWAphon Fill seam filler

The structural, static and physical construction characteristics of BASWA Phon acoustic systems can only be reached if the sole use and processing of BASWA Phon system components according to processing guidelines is ensured.

Technical changes reserved. The then-current version applies. Our guarantee only applies to the flawless composition of our materials. Information regarding usage, amounts and versions is based on experience, which cannot be transferred to differing conditions without adjustments. The information included in the diagram complies with the current state of the art. However, it cannot contain the entirety of generally accepted rules of civil engineering, applicable standards, guidelines and technical rules. These must be observed appropriately, in addition to the processing regulations, by the person performing the work. All rights reserved. Changes, reprints and photomechanical, as well as electronic, reproduction, even in excerpts, require the explicit permission from BASWA acoustic AG. Marmorweg 10, 6283 Baldegg, Tel.: +41 41



EN_DD_095m

Connection to glass partition wall with BASWA-aluminium angle profile