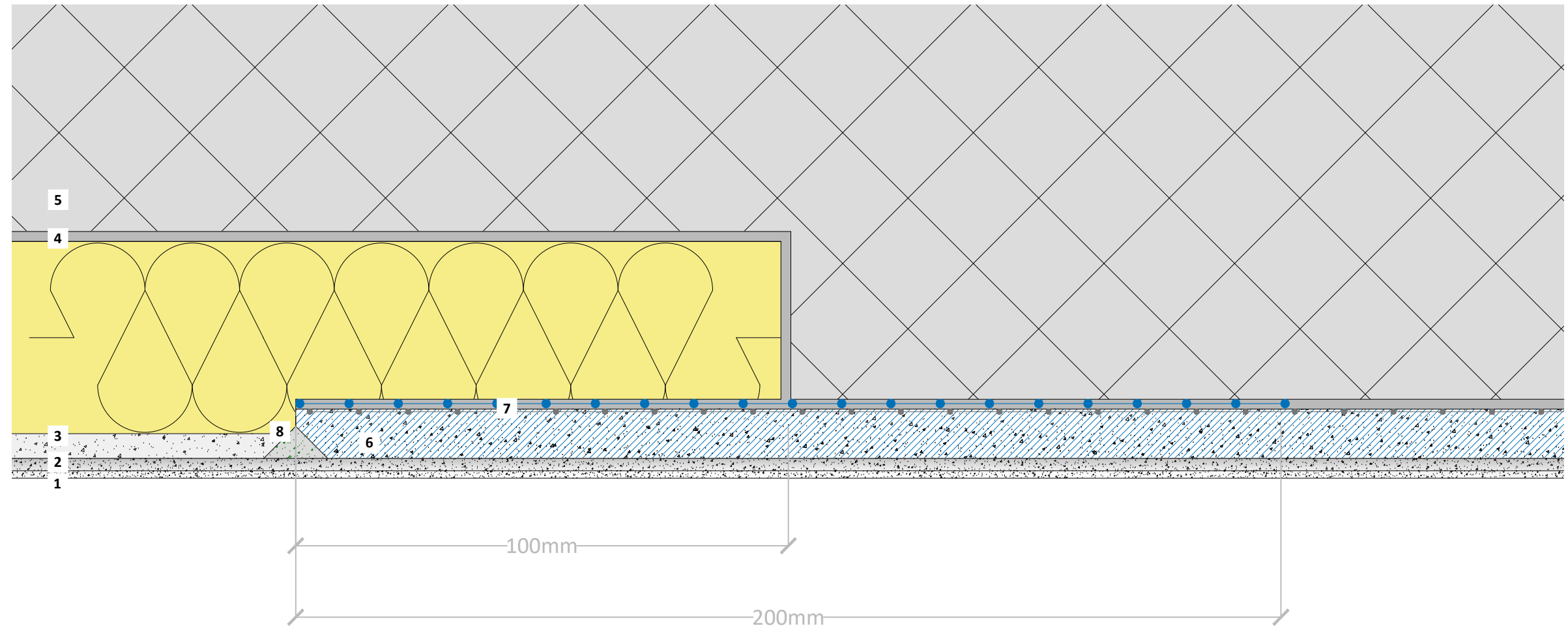


Hybridsystem - BASWA Phon

Important

This detail assures even ageing over the entire coated surface. To prevent cracking, the BASWA Hybrid tile must overlap the BASWA Phon acoustic tile by at least 10 cm, and the BASWA Phon tile must be cut back to the required level at least 10 cm wide to compensate for the height. Then embed reinforcing fabric and glue the BASWA Hybrid tile to the same height as the BASWA Phon tile. The construction with the BASWA Hybrid tile is not 100% reflective. With the BASWA system Hybrid Base 10mm suspended the rated sound absorption coefficient is $\alpha_w = 0.25$ (H), directly on massive subsoil $\alpha_w = 0.30$ (H)



- 1 BASWA Top - Finish coat
- 2 BASWA Base - Base coat
- 3 BASWA Phon - Acoustic panel
- 4 BASWA Fix C - Cement adhesive
- 5 Concrete
- 6 BASWA (Fill) **Hybrid Panel** 10mm (a018)
- 7 Reinforcement mesh min. 100mm overlapping
- 8 BASWA Fill - Seamfiller

The structural, static and physical construction characteristics of BASWA Phon acoustic systems can only be reached if the sole use and processing of BASWA Phon system components according to processing guidelines is ensured.

Technical changes reserved. The then-current version applies. Our guarantee only applies to the flawless composition of our materials. Information regarding usage, amounts and versions is based on experience, which cannot be transferred to differing conditions without adjustments. The information included in the diagram complies with the current state of the art. However, it cannot contain the entirety of generally accepted rules of civil engineering, applicable standards, guidelines and technical rules. These must be observed appropriately, in addition to the processing regulations, by the person performing the work. All rights reserved. Changes, reprints and photomechanical, as well as electronic, reproduction, even in excerpts, require the explicit permission from BASWA acoustic AG, Marmorweg 10, 6283 Baldegg, Tel.: +41 41 914 02 22, Fax: +41 41 914 02 20. Shipment not via trade. According to our general terms and conditions, shipping and payment conditions (general terms and conditions, see www.baswa.com), only to certified processors.



EN_DD_079m

Hybridsystem - Concrete / BASWA Phon

Scale 1/1

Format A3

Date 03.2020 / ALV