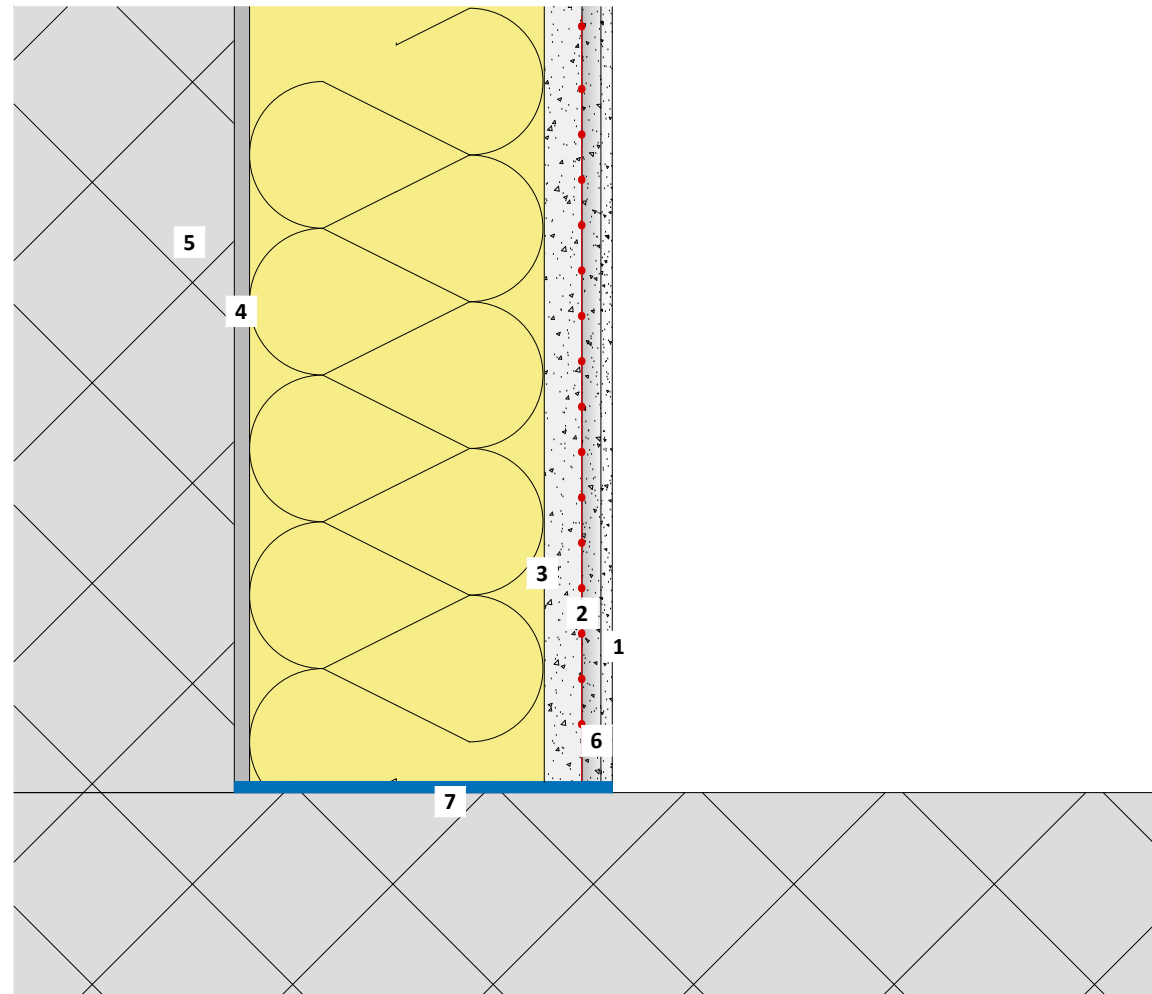


# Wall build-up with reinforcement fabric

## Important

Depending on the dimension of the mesh in the reinforcement fabric, an acoustic loss of 20-60% can occur. (4x4 mm to 6x6 mm mesh distances)  
Due the slight transparency of white top coats, white plastic mesh should ideally be used.



- 1 BASWA Top - Finish coat
- 2 BASWA Base - Base coat
- 3 BASWA Phon - Acoustic panel
- 4 BASWA Fix C - Cement adhesive
- 5 Concrete
- 6 Reinforcement mesh
- 7 Cork strip (To organize on-site)

The structural, static and physical construction characteristics of BASWA Phon acoustic systems can only be reached if the sole use and processing of BASWA Phon system components according to processing guidelines is ensured.

Technical changes reserved. The then-current version applies. Our guarantee only applies to the flawless composition of our materials. Information regarding usage, amounts and versions is based on experience, which cannot be transferred to differing conditions without adjustments. The information included in the diagram complies with the current state of the art. However, it cannot contain the entirety of generally accepted rules of civil engineering, applicable standards, guidelines and technical rules. These must be observed appropriately, in addition to the processing regulations, by the person performing the work. All rights reserved. Changes, reprints and photomechanical, as well as electronic, reproduction, even in excerpts, require the explicit permission from BASWA acoustic AG, Marmorweg 10, 6283 Baldegg, Tel.: +41 41 914 02 22, Fax: +41 41 914 02 20. Shipment not via trade. According to our general terms and conditions, shipping and payment conditions (general terms and conditions, see [www.baswa.com](http://www.baswa.com)), only to certified processors.



EN\_DD\_081m

Wall build-up with reinforcement fabric  
Wall build-up with reinforcement fabric

Scale 1/1

Format A3

Date 03.2020 / ALV