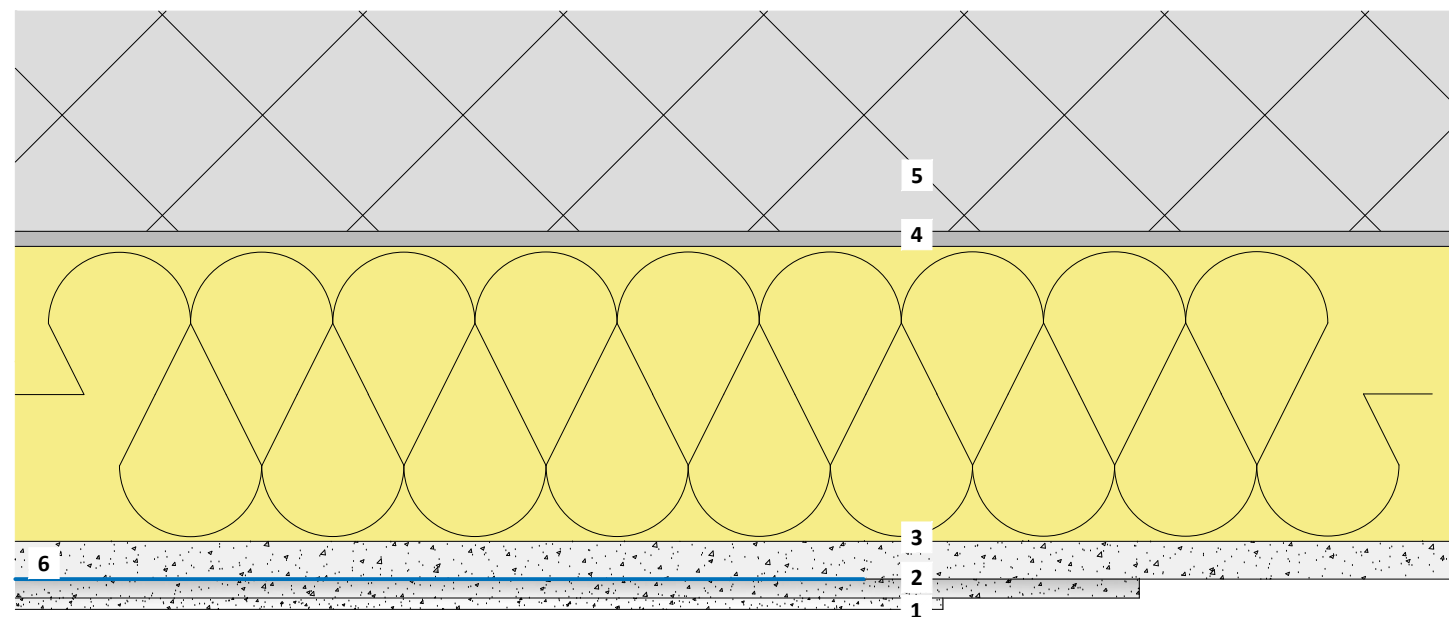


Hybrid system - with sealed pre-coating

Important

Before applying the base and top coat, the pores of the pre-coating are sealed in the area of the desired reflective field. (With transparent dispersion or plaster filling with primer -beige). This detail will show irregularly occurring soiling during the period of use. (See planning documents page 15-16)



- 1 BASWA Top - Finish coat
- 2 BASWA Base - Base coat
- 3 BASWA Phon - Acoustic panel
- 4 BASWA Fix C - Adhesive cement-containing mortar
- 5 Concrete
- 6 Latex filler / or plaster coating with primer

The structural, static and physical construction characteristics of BASWA Phon acoustic systems can only be reached if the sole use and processing of BASWA Phon system components according to processing guidelines is ensured.

Technical changes reserved. The then-current version applies. Our guarantee only applies to the flawless composition of our materials. Information regarding usage, amounts and versions is based on experience, which cannot be transferred to differing conditions without adjustments. The information included in the diagram complies with the current state of the art. However, it cannot contain the entirety of generally accepted rules of civil engineering, applicable standards, guidelines and technical rules. These must be observed appropriately, in addition to the processing regulations, by the person performing the work. All rights reserved. Changes, reprints and photomechanical, as well as electronic, reproduction, even in excerpts, require the explicit permission from BASWA acoustic AG, Marmorweg 10, 6283 Baldegg, Tel.: +41 41 914 02 22, Fax: +41 41 914 02 20. Shipment not via trade. According to our general terms and conditions, shipping and payment conditions (general terms and conditions, see www.baswa.com), only to certified processors.



EN_DD_084m

Hybrid system - with sealed pre-coating

Scale 1/1

Format A3

Date 03.2020 / ALV