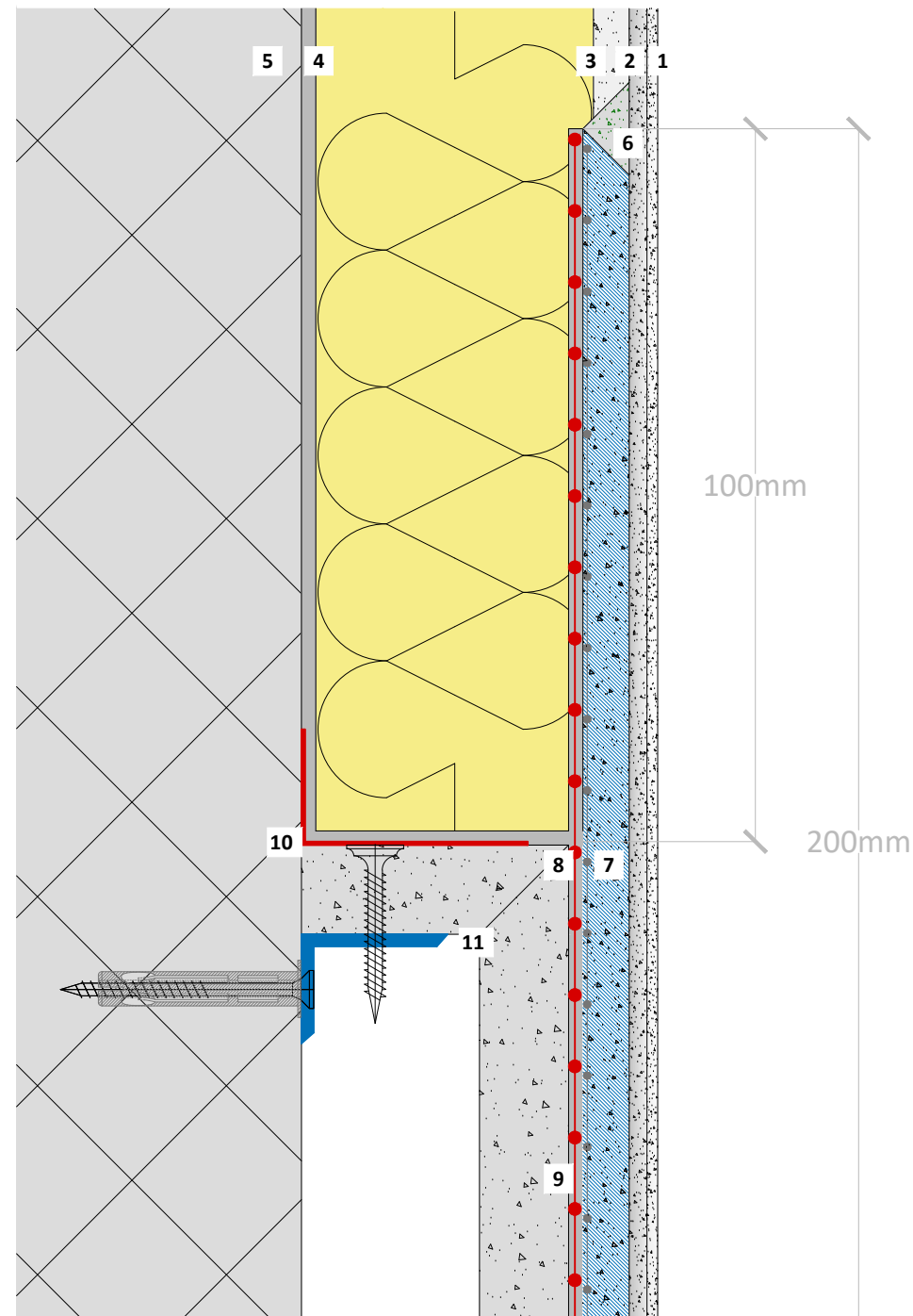


Wall build-up with reinforcement fabric on facing formwork

Wichtig

The construction of the suspended ceiling in the area of the offset must be absolutely rigidly connected to each other, solid construction and air-tight! Reflective fields cannot be covered with the top coat only. Acoustic panel have to be adapted to the final thickness in the overlapping area.



- 1 BASWA Top - Finish coat
- 2 BASWA Base - Base coat
- 3 BASWA Phon - Acoustic panel
- 4 BASWA Fix C - Cement adhesive
- 5 Concrete
- 6 BASWA Fill - Seamfiller
- 7 BASWA Hybrid Panel - Precoating with fleece
- 8 Reinforcement mesh (Width at least 10 cm overlapping)
- 9 Plasterboard Seamfiller
- 10 Vapour barrier adhesive tape (airtight) (a354)
- 11 Construction board, e.g., Fermacell or plasterboard

The structural, static and physical construction characteristics of BASWA Phon acoustic systems can only be reached if the sole use and processing of BASWA Phon system components according to processing guidelines is ensured.

Technical changes reserved. The then-current version applies. Our guarantee only applies to the flawless composition of our materials. Information regarding usage, amounts and versions is based on experience, which cannot be transferred to differing conditions without adjustments. The information included in the diagram complies with the current state of the art. However, it cannot contain the entirety of generally accepted rules of civil engineering, applicable standards, guidelines and technical rules. These must be observed appropriately, in addition to the processing regulations, by the person performing the work. All rights reserved. Changes, reprints and photomechanical, as well as electronic, reproduction, even in excerpts, require the explicit permission from BASWA acoustic AG, Marmorweg 10, 6283 Baldegg, Tel.: +41 41 914 02 22, Fax: +41 41 914 02 20. Shipment not via trade. According to our general terms and conditions, shipping and payment conditions (general terms and conditions, see www.baswa.com), only to certified processors.



EN_DD_083m

Wall build-up with Hybridssystem on facing formwork

Scale 1/1

Format A3

Date 03.2020 / ALV