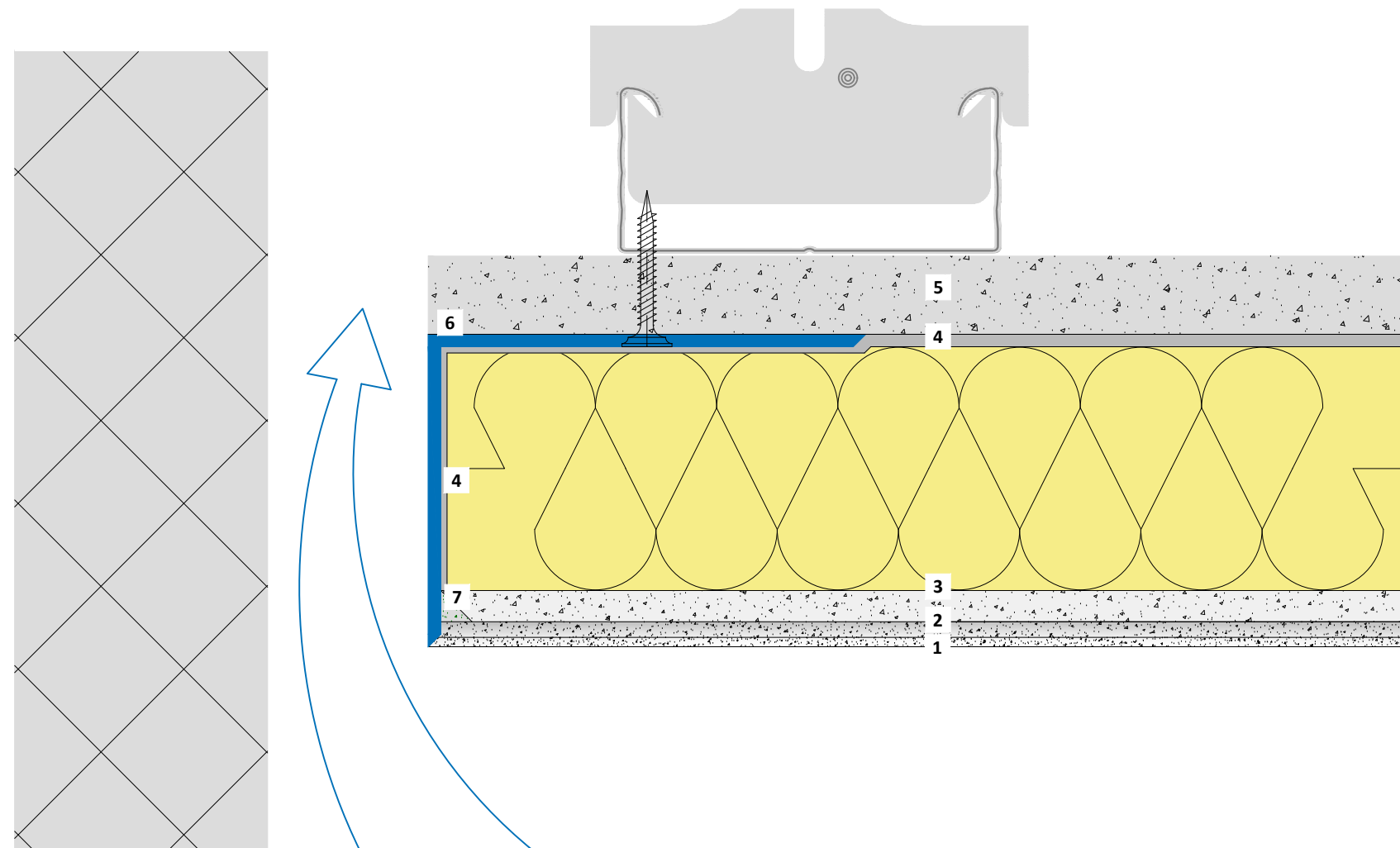


Wall connection with shadow gap, under pressure intake

Important

The vertical butt joints of the aluminium angle profiles must be sealed air-tight by adhesive on the inside. (Prevention of partial dust deposits in the top coat). Take into account the expansion coefficient of materials used near heat sources. Danger that cracks form, if aluminium, steel and PVC angle profiles are used! Acoustic panels glued front side against angle profile!



- 1 BASWA Top - Finish coat
- 2 BASWA Base - Base coat
- 3 BASWA Phon - Acoustic panel
- 4 BASWA Fix K - Plaster adhesive
- 5 Structural panel, plasterboard
- 6 Angle profile Alu. a271/a348 or PVC a314/a316
- 7 BASWA Fill - Seam filler

The structural, static and physical construction characteristics of BASWA Phon acoustic systems can only be reached if the sole use and processing of BASWA Phon system components according to processing guidelines is ensured.

Technical changes reserved. The then-current version applies. Our guarantee only applies to the flawless composition of our materials. Information regarding usage, amounts and versions is based on experience, which cannot be transferred to differing conditions without adjustments. The information included in the diagram complies with the current state of the art. However, it cannot contain the entirety of generally accepted rules of civil engineering, applicable standards, guidelines and technical rules. These must be observed appropriately, in addition to the processing regulations, by the person performing the work. All rights reserved. Changes, reprints and photomechanical, as well as electronic, reproduction, even in excerpts, require the explicit permission from BASWA acoustic AG, Marmorweg 10, 6283 Baldegg, Tel.: +41 41 914 02 22, Fax: +41 41 914 02 20. Shipment not via trade. According to our general terms and conditions, shipping and payment conditions (general terms and conditions, see www.baswa.com), only to certified processors.



EN_DD_021s

Wall connection with shadow gap, under pressure intake

Scale 1/1

Size A3

Date 03.2020 / ALV