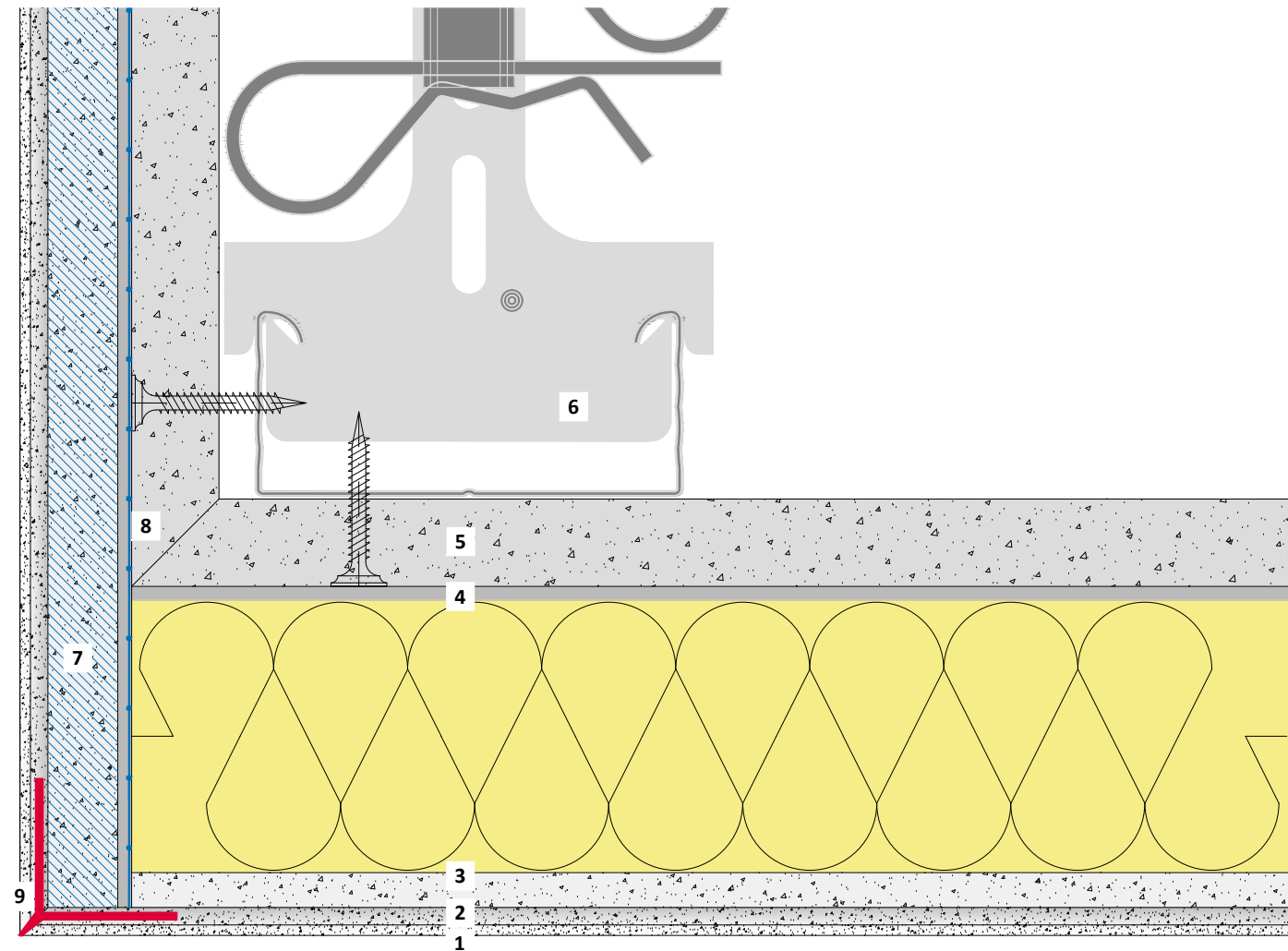


Finish, 90° outside corner (with one-sided BASWA Phon coating)

Important

The final layer of the vertical and horizontal surface should be created in different stages. Adherence to the drying times.

Apply the edge protection profile PVC White a027 directly onto the acoustic panels with spray adhesive (for base and final layer thickness Total approx. 3.5-4.0 mm) in the case of two-layer systems "Classic" Base, Fine or Top. With single layer systems BASWA Base or Fine, the precoating must first be partially sanded back by 1.5 mm to the leg width (for final layer thickness approx. 1.5-2.0 mm).



- 1 BASWA Top - Finish coat
- 2 BASWA Base - Base coat
- 3 BASWA Phon - Acoustic panel
- 4 BASWA Fix K - Plaster adhesive
- 5 Structural panel, plasterboard
- 6 BASWA edge protection profile PVC, white (027)
- 7 BASWA (Fill) Hybrid panel 10mm (a018)
- 8 Embedded reinforcement fabric
- 9 Construction profile

The structural, static and physical construction characteristics of BASWA Phon acoustic systems can only be reached if the sole use and processing of BASWA Phon system components according to processing guidelines is ensured.

Technical changes reserved. The then-current version applies. Our guarantee only applies to the flawless composition of our materials. Information regarding usage, amounts and versions is based on experience, which cannot be transferred to differing conditions without adjustments. The information included in the diagram complies with the current state of the art. However, it cannot contain the entirety of generally accepted rules of civil engineering, applicable standards, guidelines and technical rules. These must be observed appropriately, in addition to the processing regulations, by the person performing the work. All rights reserved. Changes, reprints and photomechanical, as well as electronic, reproduction, even in excerpts, require the explicit permission from BASWA acoustic AG, Marmorweg 10, 6283 Baldegg, Tel.: +41 41 914 02 22, Fax: +41 41 914 02 20. Shipment not via trade. According to our general terms and conditions, shipping and payment conditions (general terms and conditions, see www.baswa.com), only to certified processors.



EN_DD_042s

Finish, 90° outside corner (with one-sided BASWA Phon coating)

Scale 1/1

Size A3

Date 03.2020 / ALV