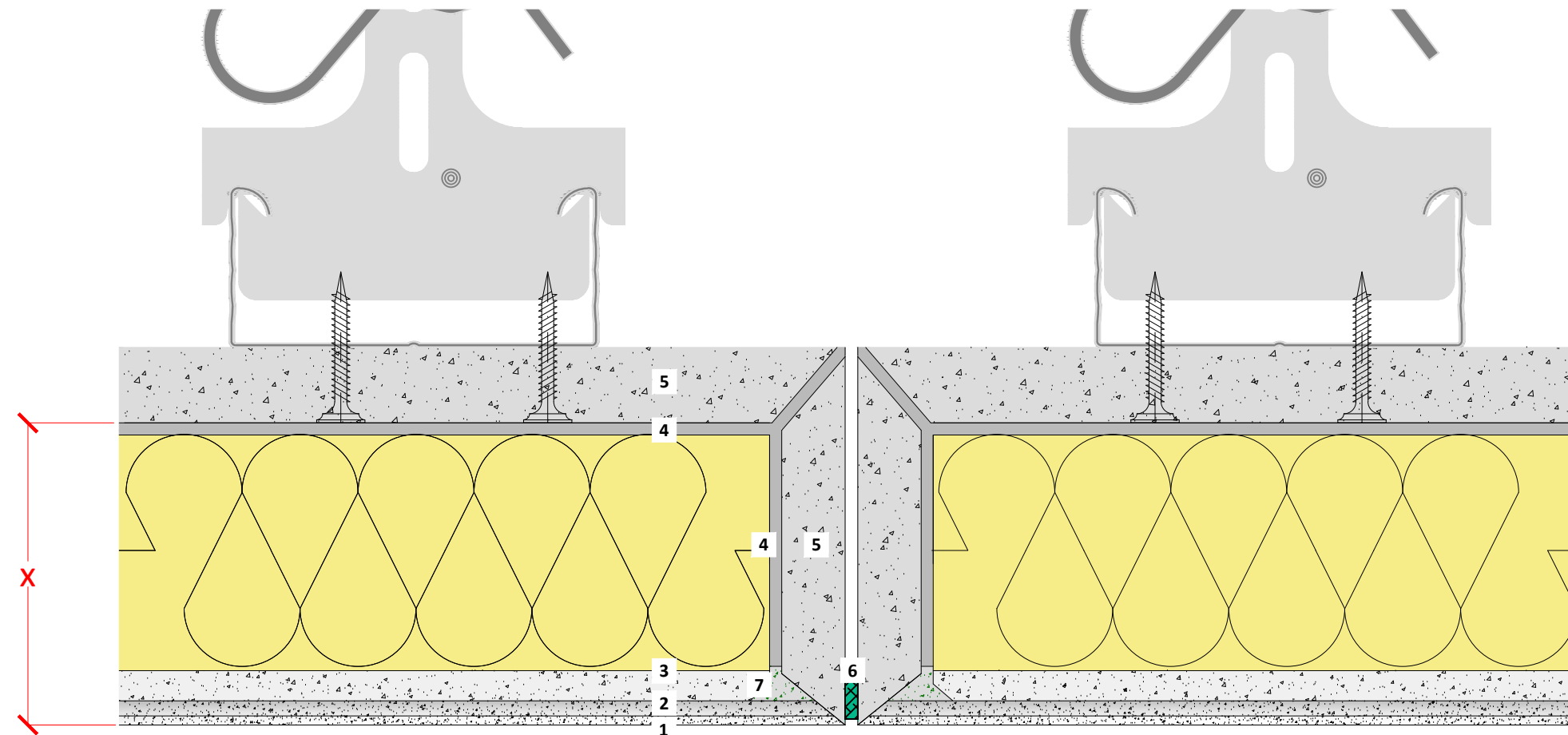


## Formation of an expansion gap (with prefabricated plasterboard folding element)

### Important

Construction-related expansion gaps in the substrate must likewise be adopted in the BASWA Phon acoustic system! Pre-fabricated plasterboard folding element must be painted twice with dispersion paint before applying the BASWA Phon base and top coat. (Strengthening of the beveled edge) Acoustic panels glued front side against folding element! Folding element is to be organized on site.

**X = System Strength: 30 / 40 / 50 or 70 mm**



- 1 BASWA Top - Finish coat
- 2 BASWA Base - Base coat
- 3 BASWA Phon - Acoustic panel
- 4 BASWA Fix K - Plaster adhesive
- 5 Pre-fabricated plasterboard folding element
- 6 PE tape for joints (optionally as screen)
- 7 BASWA Fill - Seam filler

The structural, static and physical construction characteristics of BASWA Phon acoustic systems can only be reached if the sole use and processing of BASWA Phon system components according to processing guidelines is ensured.

Technical changes reserved. The then-current version applies. Our guarantee only applies to the flawless composition of our materials. Information regarding usage, amounts and versions is based on experience, which cannot be transferred to differing conditions without adjustments. The information included in the diagram complies with the current state of the art. However, it cannot contain the entirety of generally accepted rules of civil engineering, applicable standards, guidelines and technical rules. These must be observed appropriately, in addition to the processing regulations, by the person performing the work. All rights reserved. Changes, reprints and photomechanical, as well as electronic, reproduction, even in excerpts, require the explicit permission from BASWA acoustic AG, Marmorweg 10, 6283 Baldegg, Tel.: +41 41 914 02 22, Fax: +41 41 914 02 20. Shipment not via trade. According to our general terms and conditions, shipping and payment conditions (general terms and conditions, see www.baswa.com), only to certified processors.



**EN\_DD\_055s**

Formation of an expansion gap with Pre-fabricated plasterboard folding element

Scale 1/1

Size A3

Date 03.2020 / ALV